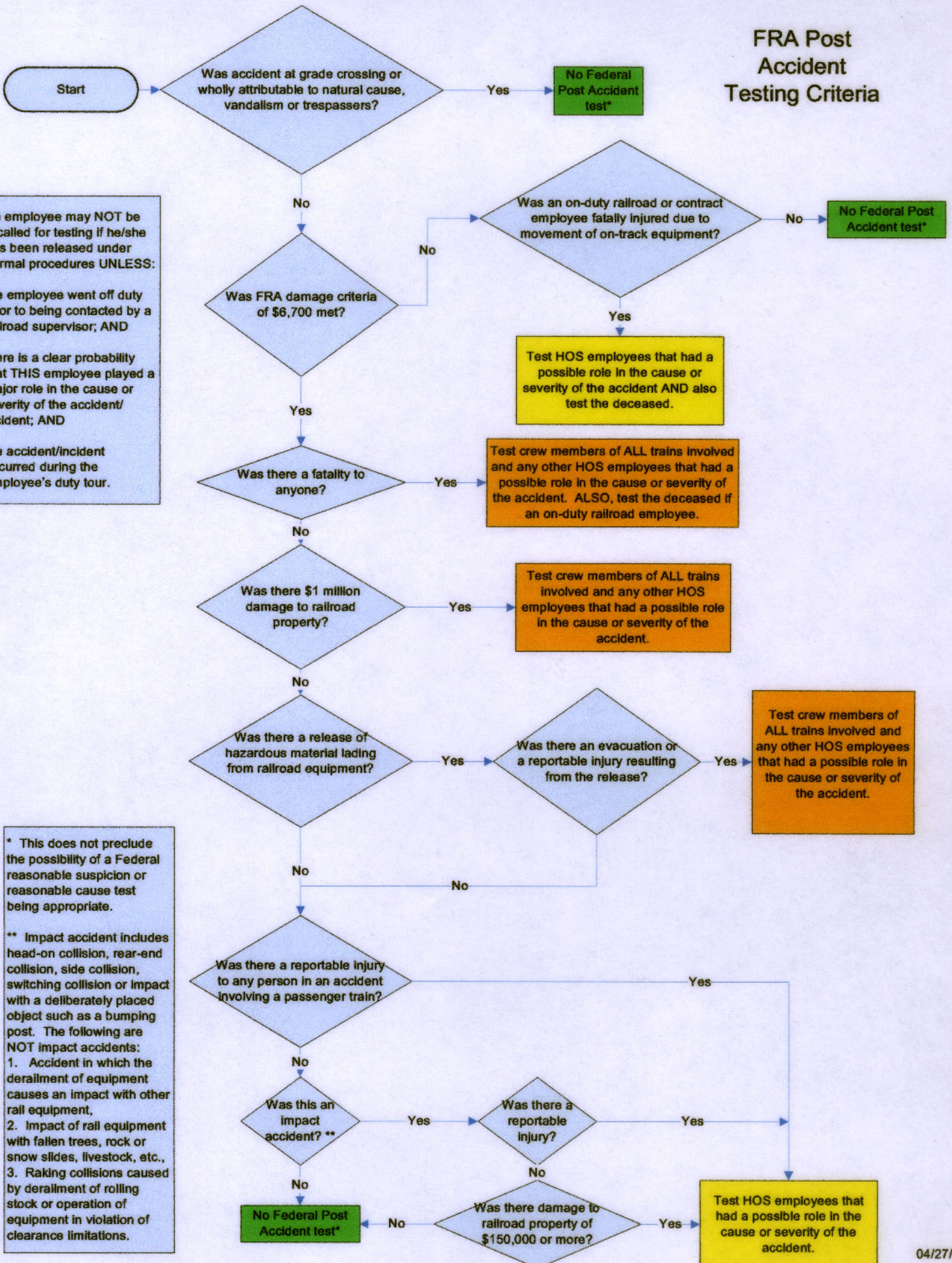


FRA Post Accident Testing Criteria



An employee may NOT be recalled for testing if he/she has been released under normal procedures UNLESS:

- the employee went off duty prior to being contacted by a railroad supervisor; AND
- there is a clear probability that THIS employee played a major role in the cause or severity of the accident/incident; AND
- the accident/incident occurred during the employee's duty tour.

* This does not preclude the possibility of a Federal reasonable suspicion or reasonable cause test being appropriate.

** Impact accident includes head-on collision, rear-end collision, side collision, switching collision or impact with a deliberately placed object such as a bumping post. The following are NOT impact accidents:

1. Accident in which the derailment of equipment causes an impact with other rail equipment,
2. Impact of rail equipment with fallen trees, rock or snow slides, livestock, etc.,
3. Raking collisions caused by derailment of rolling stock or operation of equipment in violation of clearance limitations.